

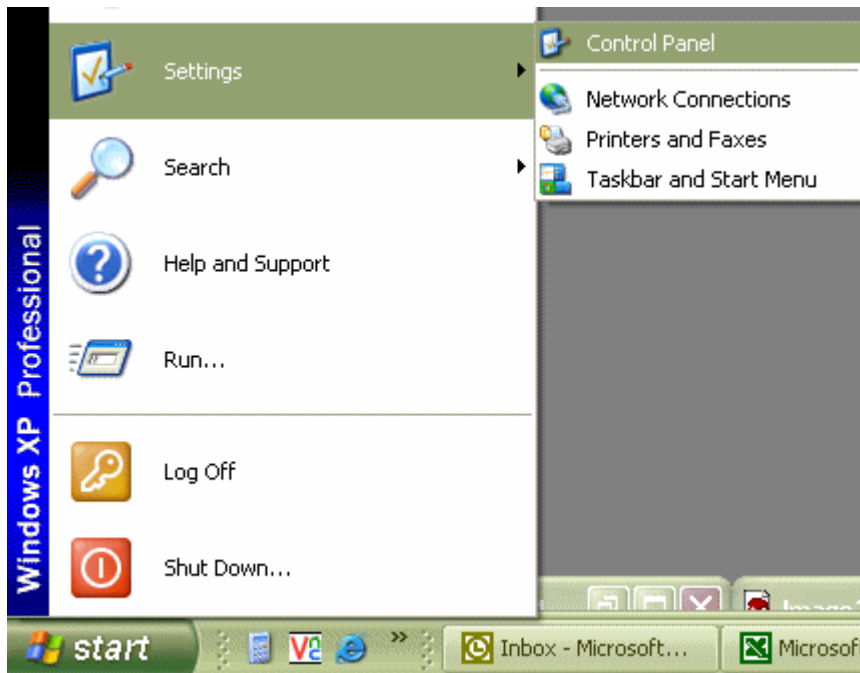


Wireless Internet Connection Information

The Kokomo-Howard County Public Library provides free wireless access for library patrons. However, we are unable to provide support for patron owned equipment. Please follow the instructions below to ensure your wireless device is able to connect to our networks.

First, your wireless network card must be properly configured. To access your network card settings on a Windows operating system follow these steps:

Click the "START" button and then either direct your mouse to "Settings - Control Panel" or directly to Control Panel if you have Windows XP.



From your Control Panel find the icon labeled "Network Connections" and double click it.



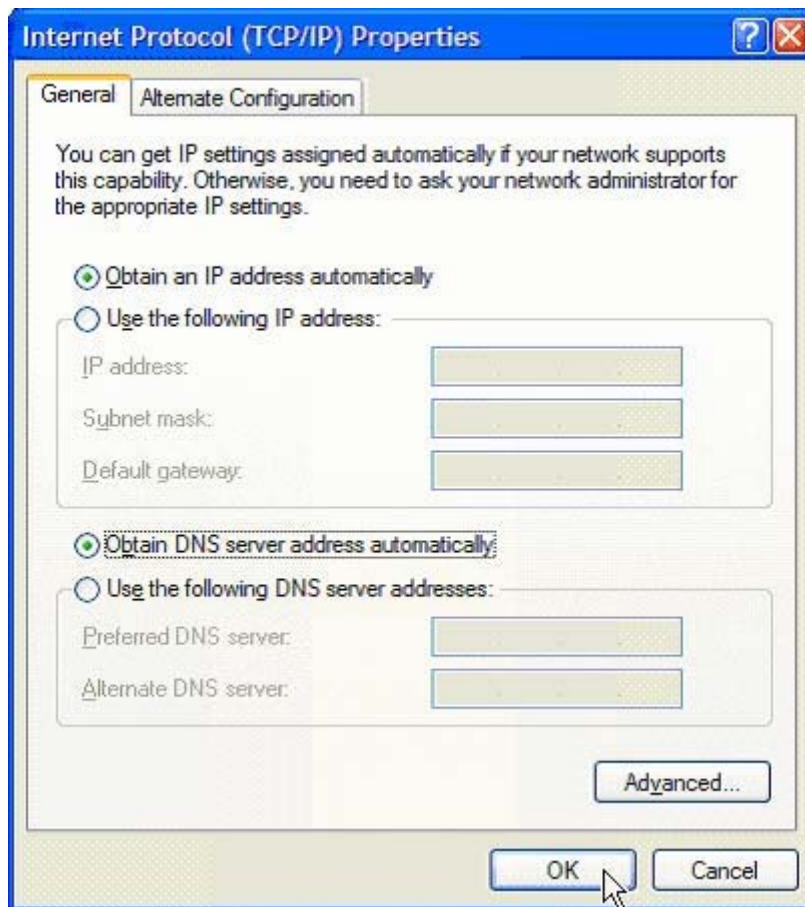
Your Network Connections menu will list all of the adapters in your computer. You may have to disable all of your adapters except the one labeled "Wireless Network Connection". Also, if you see an entry labeled "Network Bridge" you should disable it as well. You can disable connections by right-clicking on them and select 'disable'.



Next, right-click your "Wireless Network Connection" and select properties. Then select "Internet Protocol (TCP/IP)" from the list of components and click the "properties" button.



Your TCP/IP settings should be set to obtain an IP address and obtain DNS server addresses automatically.



Click OK to save your settings and exit all windows. You may need to reboot to obtain your new connection information.

If you still cannot connect use your wireless card connection software for the following settings:

- The "Service Set Identifier" (SSID) should be set to "Library_Wifi"
- Wireless mode should be set to "Infrastructure" and not "Ad Hoc"

Most wireless cards include software that checks for signal strength. Check to make sure you are getting a signal. If not make sure your card does not have an antenna that must be ejected or a switch to flip. Make sure the link quality and signal strength are both at least "good". If not move about the library to a location that has a stronger signal.